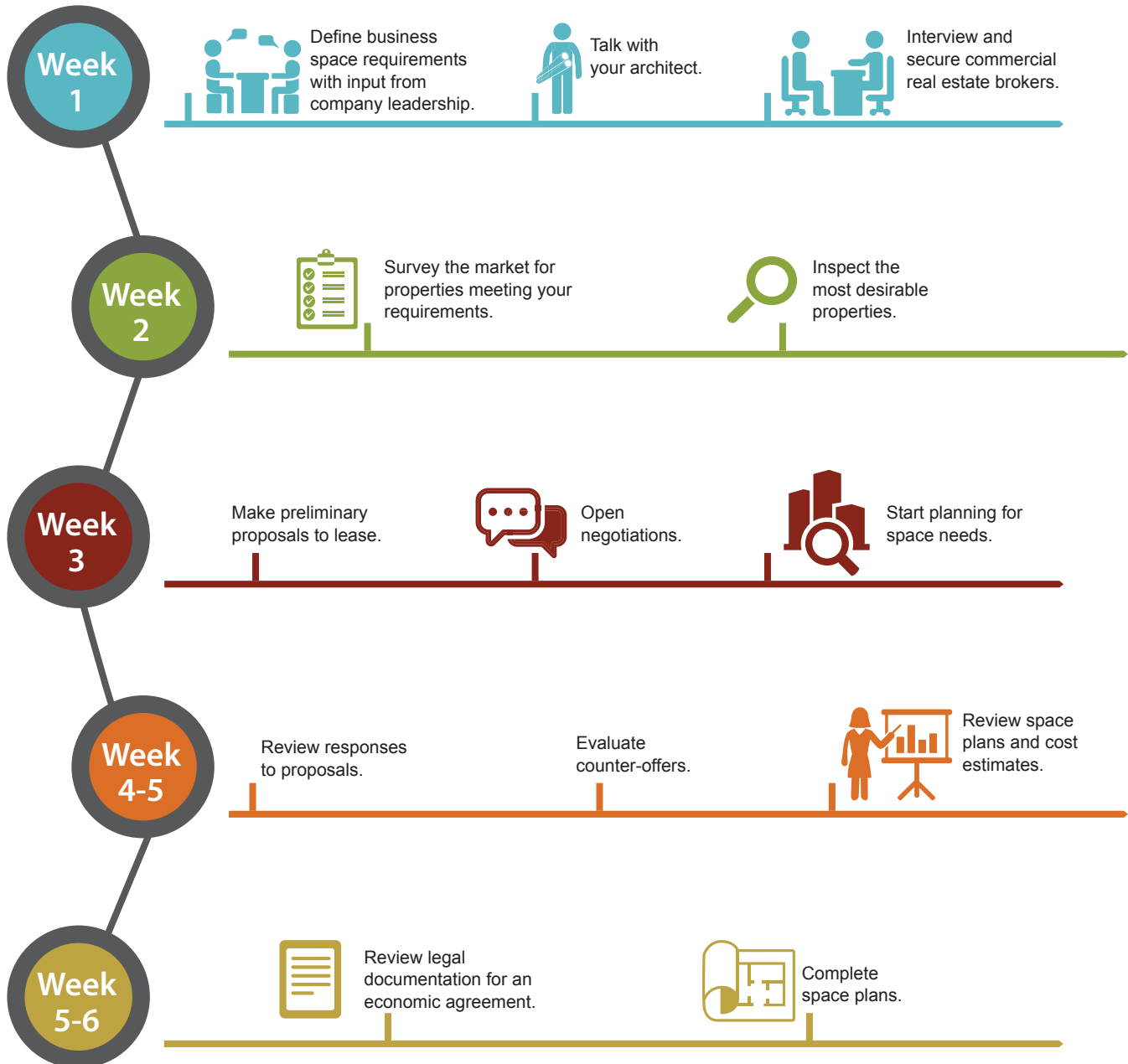


BUSINESS RELOCATION TIMELINE



CREG

You should begin your relocation efforts at least 4-8 months before your move date. By planning well in advance, time will be your ally. Here's a timeline of the leasing process. This will help you accomplish all of your objectives in the right order and on time.



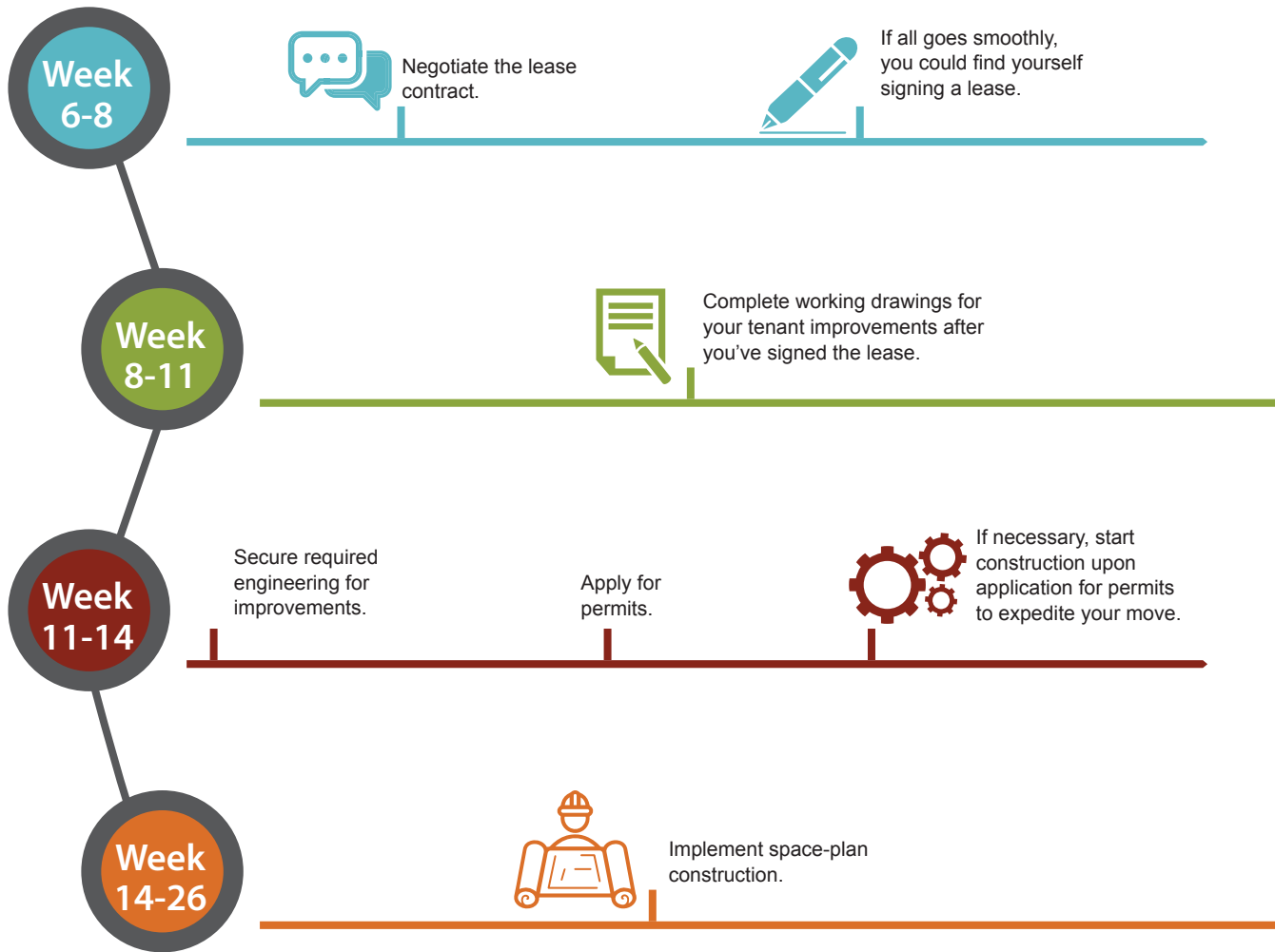
Commercial Real Estate Group of Tucson LLC

WWW.CRETUCSON.COM • Tel 520•299•3400 • Michael@cretucson.com

BUSINESS RELOCATION TIMELINE



CREG



If time is short

- limit your choices to buildings with space that comes very close to your needs
- look to sublease space that meets your requirements
- attempt to work out alternative solutions with your existing landlord.

Presented by Commercial Real Estate Group of Tucson.



Commercial Real Estate Group of Tucson LLC

WWW.CRETUCSON.COM • Tel 520•299•3400 • Michael@cretucson.com